

Monadnock Envi® Wall Art

Grade C2905-417 642 gsm



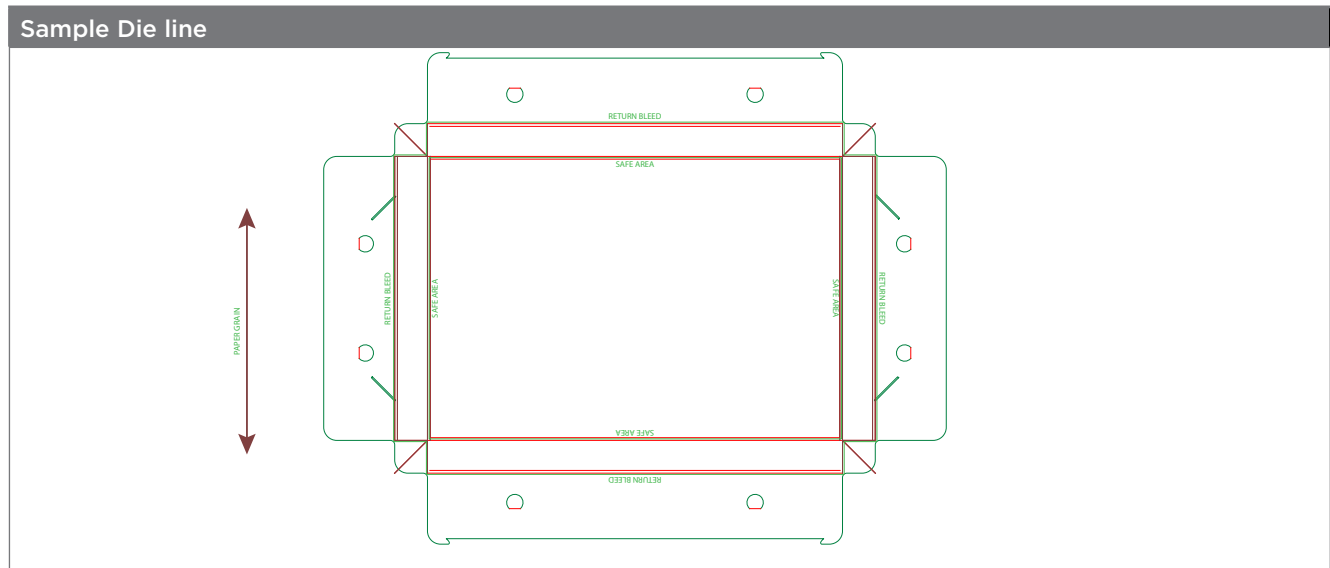
Production Guidelines for Print Service Providers

Type of Material: Renewable Wood-Fiber Based Faux-Canvas Gallery Wrap Sheets for Flatbed Inkjet Printing with UV Inks

Physical Construction: Durable composite paper structure with inkjet print receptive coating

Physical Properties		
Content	PVC-free renewable wood fiber-based substrate	Polymer-reinforced cellulosic pulp with durable inkjet compatible coating

Printing Compatibility & Recommendations		
Accepted printers	The coated surface is optimized for inkjet printing	UV inks
UV Cure Temperature	Use lowest setting for necessary cure to optimize folding performance	
Artwork	Artwork will wrap along the sides to the back of the structure. Sufficient negative space is required around the subject matter for optimal results. This is demonstrated in the sample die line templates provided.	



Post-Print Router Setting Recommendations	
Crease Settings	See provided die-line for reference. Creasing both sides of the sheet optimizes performance. It helps maintain structure and eliminates potential for cracking on the folds. Crease wheel: 26 mm diameter, 6 point crease wheel used for all creases
Crease Settings Back/Blank Side of Sheet	Grain Crease/Red Layer: .015" past 0 in pressure / not %; 2500" min speed Counter Grain crease/Purple Layer: 0.25" past 0 in pressure / not %; 2500 in/min speed
Crease Settings Front/Printed Side of Sheet	Crease wheel: 26 mm diameter, 6 point crease wheel used for all creases Grain Crease/Brown Layer: 0.2" past 0 pressure / not %; 2500 in/min speed
Cut Settings	0 depth per machine specifications; 3000 in/min. (Static/Rigid Material Knife)

This information is presented in good faith for verification and corroboration by the prospective user. No warranty is implied or to be assumed.

Monadnock Envi® Wall Art

Grade C2905-417 642 gsm

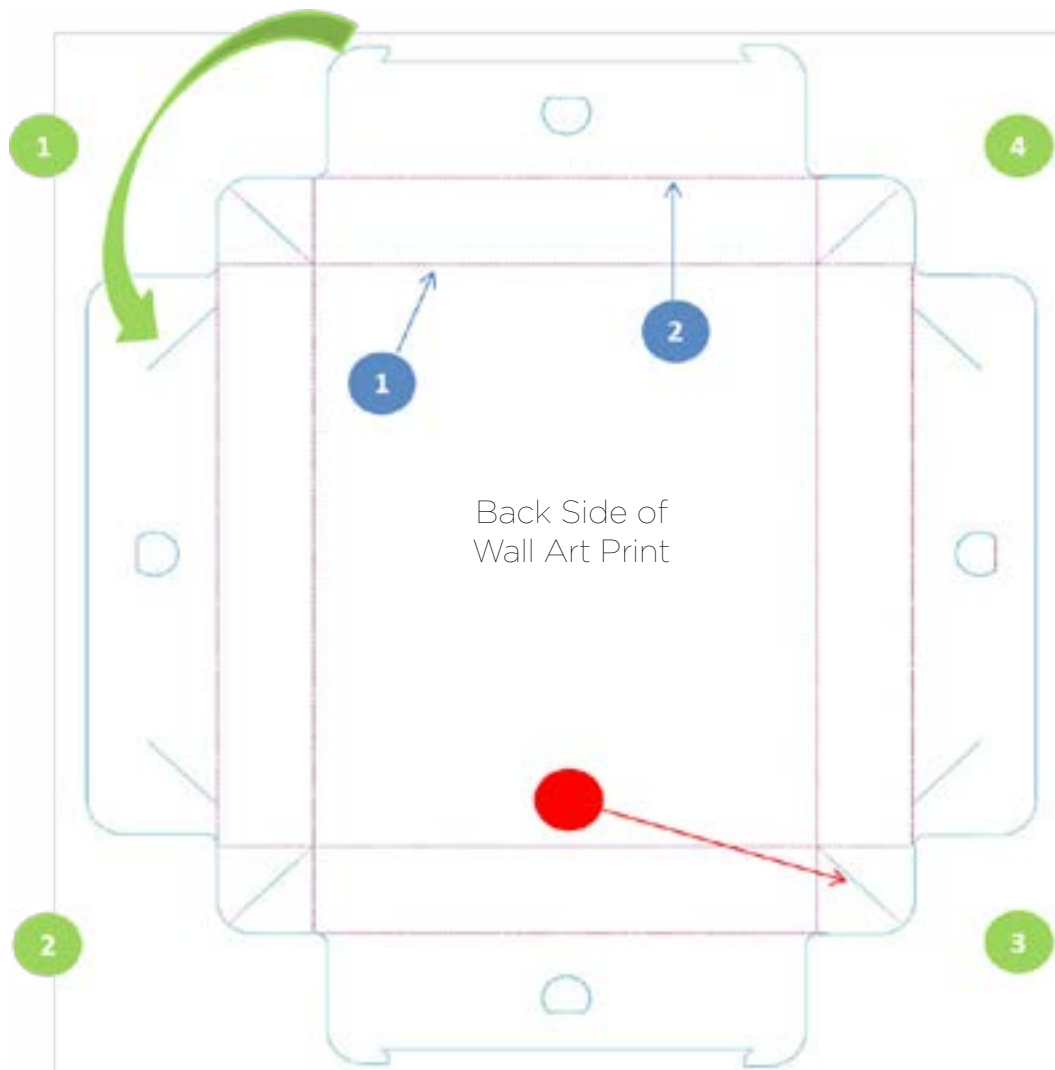


Production Guidelines for Print Service Providers

Type of Material: Renewable Wood-Fiber Based Faux-Canvas Gallery Wrap Sheets for Flatbed Inkjet Printing with UV Inks

Physical Construction: Durable composite paper structure with inkjet print receptive coating

Folding Guidelines



- 1** Pre-fold on inside scores first, then outside scores.
- 2** Corners should fold to the inside back of the piece.
- 3** Work your way around and slip tabs into precut slits.